

Roll The Dice with Vanina



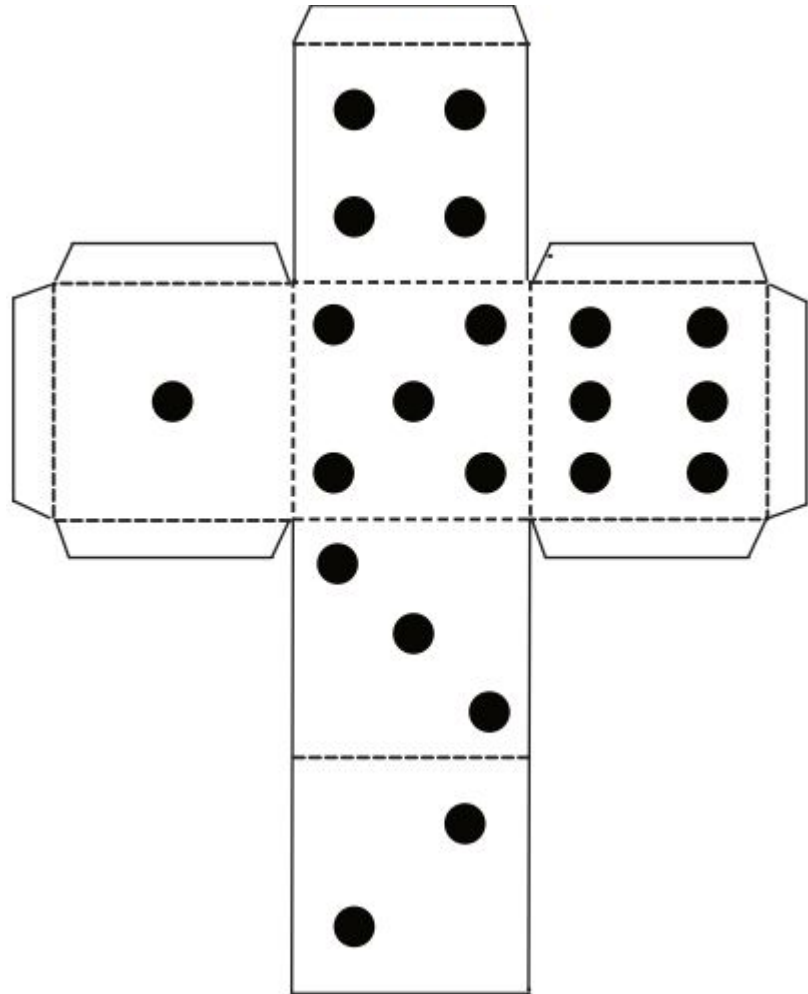
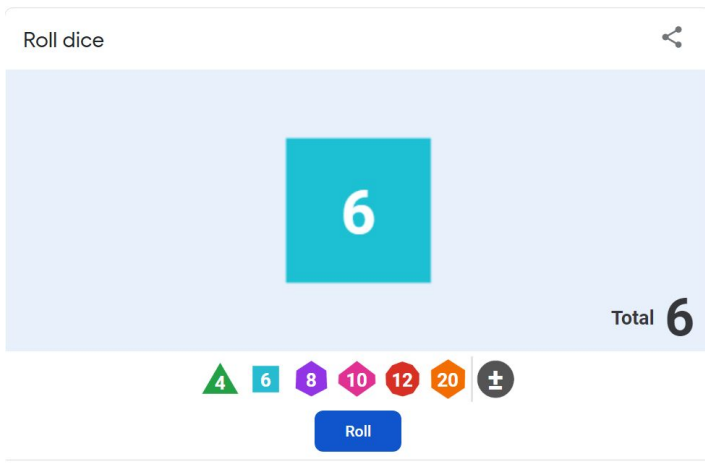
Roll the dice is a FUN way of creating.

Each month, we will explore new design possibilities with elements of art, colors, and even feelings! while leaving everything to chance.

This is a great exercise to get out of your comfort zone, build your creativity, and discover new opportunities.

Come play with us!





Roll-A-Picasso

	1st roll face	2nd roll eye	3rd roll nose	4th roll mouth

Roll-A-Kandinsky

Make a Kandinsky style masterpiece. Roll two dice. The first die will tell you what color to use. Look at the colorful outlines of each die on the chart as a guide. The second die will tell you what kind of shape or line to draw according to the chart. You can repeat the chart as many times as you'd like until you feel your masterpiece is complete.

Roll & Draw						
Roll #1 Circles						
Roll #2 Abstracts						
Roll #3 Repetitions						
Roll #4 Triangles						
Roll #5 Lines						
Roll #6 Rectangles						

How to Use the Color Wheel to Build Color Schemes

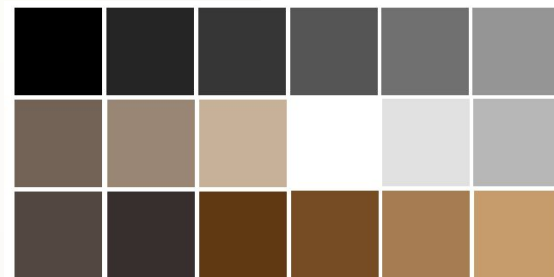
Analogous



Monochromatic



Neutrals



Triadic



Complementary





Elements of Art

Please Note: We will not working with the Element of Art SPACE on this project.

VOCABULARY ELEMENTS OF ART: The visual components of color, form, line, shape, space, texture, and value.

LINE: An element of art defined by a point moving in space. Line may be two-or three-dimensional, descriptive, implied, or abstract.

Shape: An element of art that is two-dimensional, flat, or limited to height and width.

Form: An element of art that is three-dimensional and encloses volume; includes height, width AND depth (as in a cube, a sphere, a pyramid, or a cylinder). Form may also be free flowing.

Value: The lightness or darkness of tones or colors. White is the lightest value; black is the darkest. The value halfway between these extremes is called middle gray.

Space: An element of art by which positive and negative areas are defined or a sense of depth achieved in a work of art.

Color: An element of art made up of three properties: hue, value, and intensity. • Hue: name of color • Value: hue's lightness and darkness (a color's value changes when white or black is added) • Intensity: quality of brightness and purity (high intensity= color is strong and bright; low intensity= color is faint and dull)

Texture: An element of art that refers to the way things feel, or look as if they might feel if touched.



Die #	Color Scheme	Elements of Art	Inspiration
1	Monochromatic	Line	Text
2	Complementary	Shape	Song
3	Triadic	Color	Place
4	Analogous	Form	Feeling
5	Neutral plus 1	Value	Memories
6	Achromatic/Neutral	Texture	Maker's choice

LIFE'S A GAME,



ROLL THE DICE.